

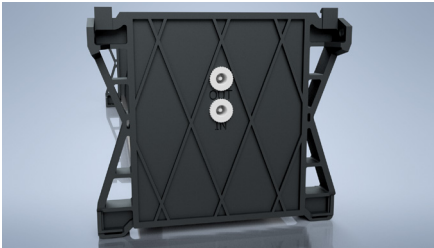
## IMPORTANT! READ BEFORE USE

All persons responsible for the operation, maintenance and repair of this product must read this manual carefully. The product will function in accordance with the specifications only if it is operated, maintained and repaired in accordance with the manufacturer's instructions.

## Description

1. This product is designed to charge up to 5 WatchGas QGM Gas detectors in one time.
2. Please use charger for 5WSCC P/N: 7177214
3. After connecting slide in the QGM which is needed to be charged.

Please use charger for 5WSCC P/N: 7177214



Connect Charger (7177214) to the Input port.

Link up to 4 units with the (Optional) Link cable(7177215) connect from output port to second cradle's input port



Only use 5WSCC Charger P/N: 7177214 in combination.



Mount Charging cradle to desk or wall use recommended 4.8mm mounting screws



Stackable up to four chargers



It is also possible to charge up right

## Repairs

Internal and external modifications to the device can be dangerous, and are prohibited. Should a defect occur, you can contact our service department.

## Disposal

Dispose of materials in accordance with the relevant legal requirements. You may return the unit to us for safe dismantling and disposal.

## Specifications

- Charge up to 5 QGM devices
- Input power 12Vdc 6.5A
- Operating Temperature range 0°C to +35°C
- Made in Netherlands

## Limited Warranty

WATCHGAS warrants this product to be free of defects in workmanship and materials-under normal use and service-for two years from the date of purchase from the manufacturer or from the product's authorized reseller.

The manufacturer is not liable (under this warranty) if its testing and examination disclose that the alleged defect in the product does not exist or was caused by the purchaser's (or any third party's) misuse, neglect, or improper installation, testing, or calibrations. Any unauthorized attempt to repair or modify the product, or any other cause of damage beyond the range of the intended use, including damage by fire, lightning, water damage or other hazard, voids liability of the manufacturer.

In the event that a product should fail to perform up to manufacturer specifications during the applicable warranty period, please contact the product's authorized reseller or WATCHGAS service center at +31 (0)85 01 87 709 for repair/return information.



**WatchGas B.V.**  
Sextantstraat 61  
2901 ZZ Capelle aan den IJssel  
+31 (0)85 01 87 709  
The Netherlands  
info@watchgas.nl - www.watchgas.eu