

# EJEMPLOS DE UTILIZACIÓN



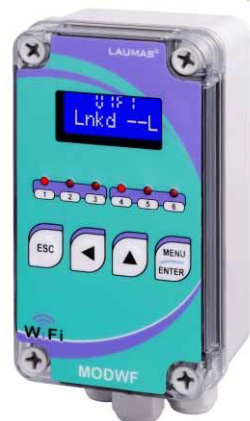
TLKWF



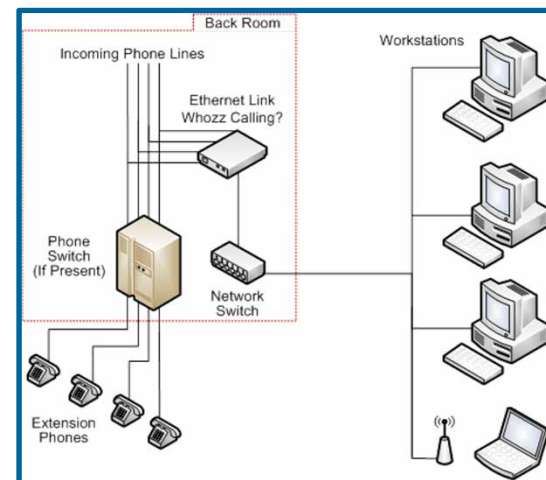
Load Cell



MODWF



RS-485



Serie W  
(OPZW1RADIO)

# TLKWF - Serie W (OPZW1RADIO) - RED

INSTRUMENTOS CONFIGURADOS COMO CLIENTE CON DIFERENTES DIRECCIONES IP



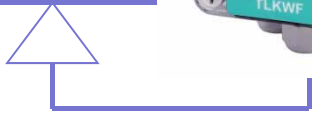
# TLKWF - MODWF - PC/PLC



TLKWF

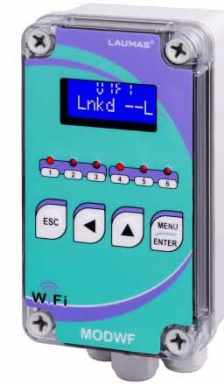


Load Cell

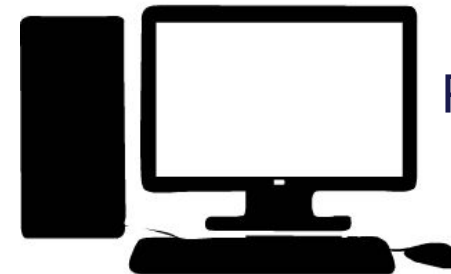


RIP, MODBUS, SLAVE, ASCII, etc.

MODWF



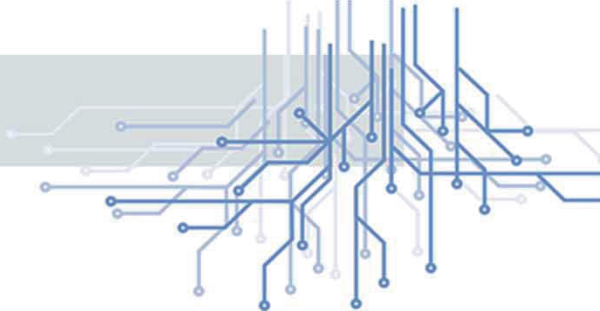
RS232 o RS485



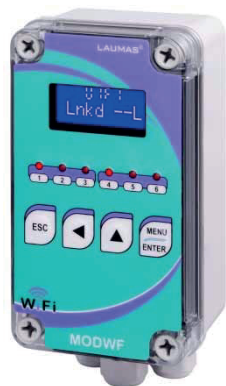
PC/PLC



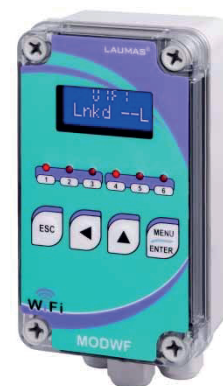
# INSTRUMENTOS - MODWF - PC/PLC



MODWF



RIP, MODBUS, SLAVE, ASCII, etc.

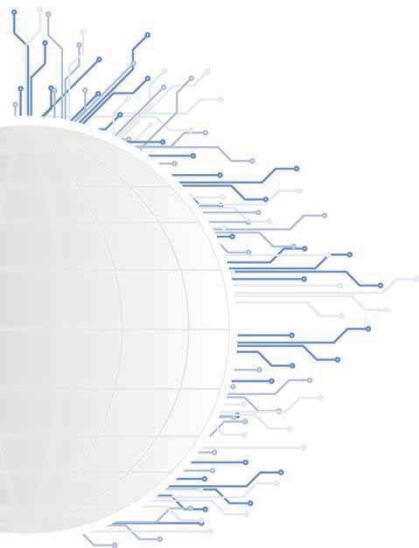
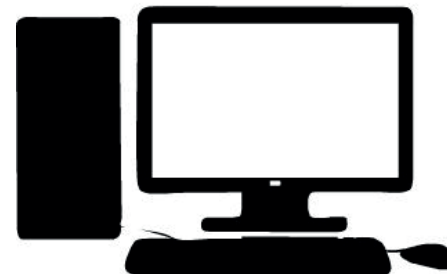


MODWF

RS-485



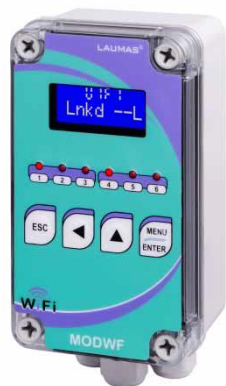
RS232 o RS485



# MODWF - INSTRUMENTOS/PC/PLC

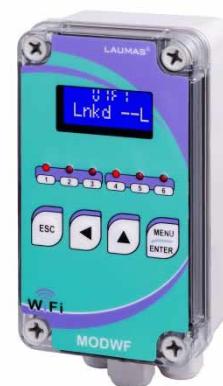


MODWF



RIP, MODBUS, SLAVE, ASCII, etc.

MODWF



RS-232



PC/PLC



RS232 o RS485



PC/PLC



(OPZW1RADIO)



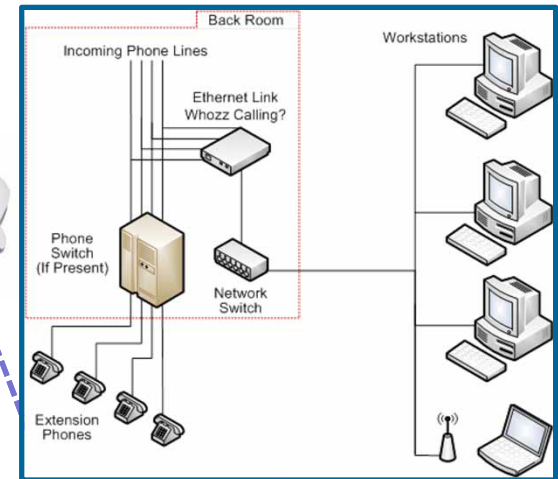


# INSTRUMENTOS – MODWF - RED

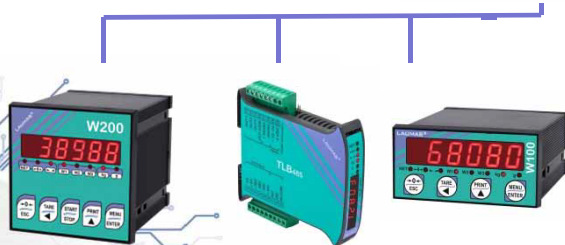


INSTRUMENTOS CONFIGURADOS COMO CLIENTE CON DIFERENTES DIRECCIONES IP

## MODWF



RS-485

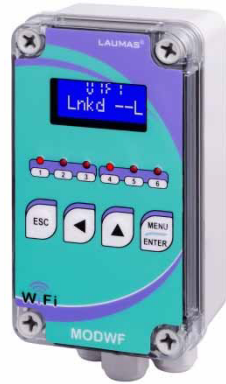


# INSTRUMENTOS - MODWF - APP



- APP Y SOFTWARE POR EL CLIENTE
- LAUMAS PUEDE SUMINISTRAR EL PROG-NG CON EL PUERTO SERIE VIRTUAL

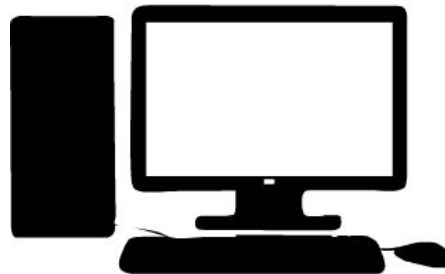
MODWF



RS-485



PC/PLC



# Serie W (OPZW1RADIO) - MODWF - PC/PLC

SOFTWARE POR EL CLIENTE

(OPZW1RADIO)



Load Cell



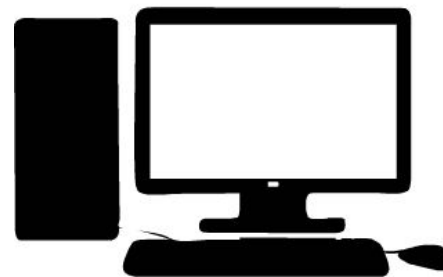
RIP, MODBUS, SLAVE, ASCII, etc.

MODWF



RS232 o RS485

PC/PLC





# Serie W (OPZW1RADIO) - TLKWF - PC/PLC

- EL TLKWF FUNCIONA COMO REPETIDOR
- POSIBILIDAD DE LEER LOS DATOS DEL PC/PLC MANTENIENDO LA CONEXIÓN WIFI AL MISMO TIEMPO

(OPZW1RADIO)

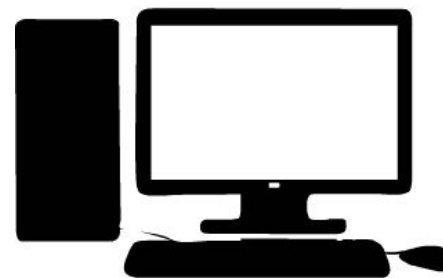


Load Cell



TLKWF

RS232 o RS485



PC/PLC

# SITIO WEB INTEGRADO

## TLKWF y Instrumentos serie W con OPZW1RADIO

INSTRUMENTOS CONFIGURADOS COMO CLIENTE O COMO PUNTO DE ACCESO

